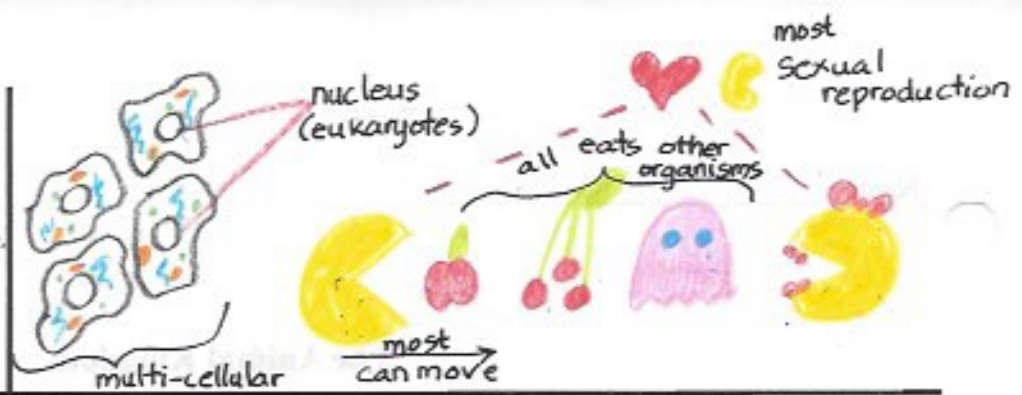
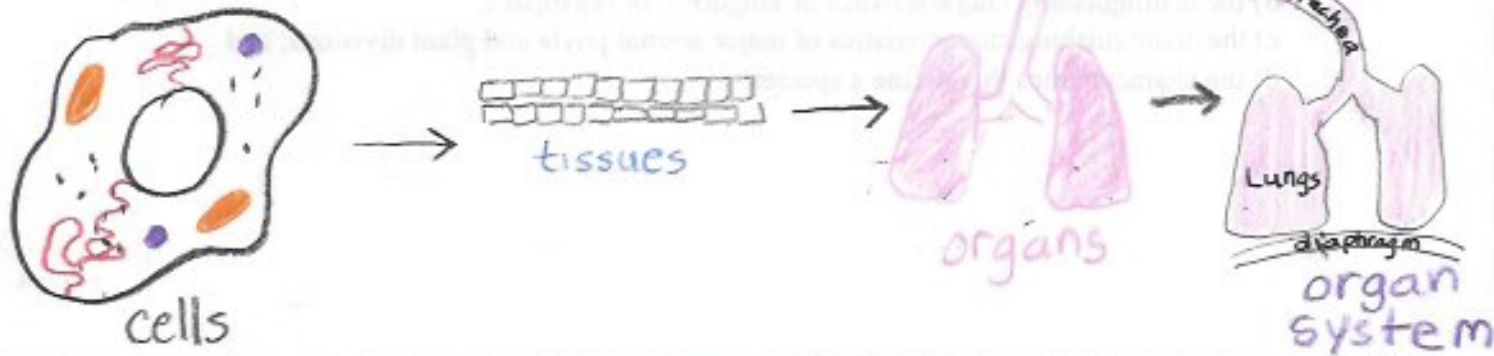


1. What characteristics do all animals have in common? They are multi-cellular eukaryotes that consume other organisms. Most of them can move and reproduce sexually.



2. Draw a hierarchy showing how cells, tissues, organs, and organ systems are related to each other.



3. Why do animals depend upon plants? Animals depend on plants to create the food that they need to eat.

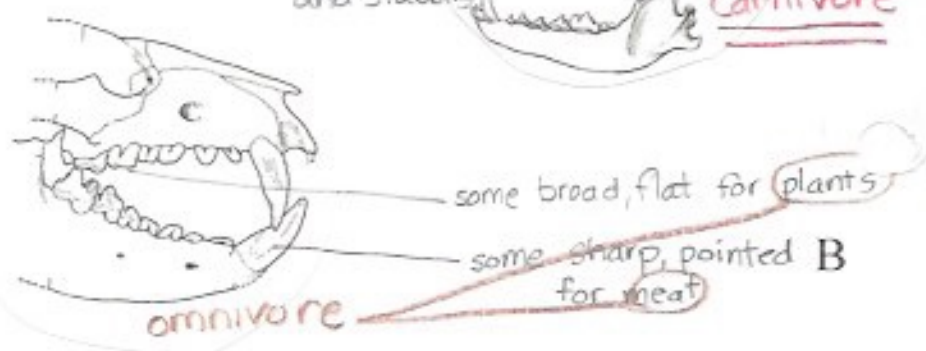
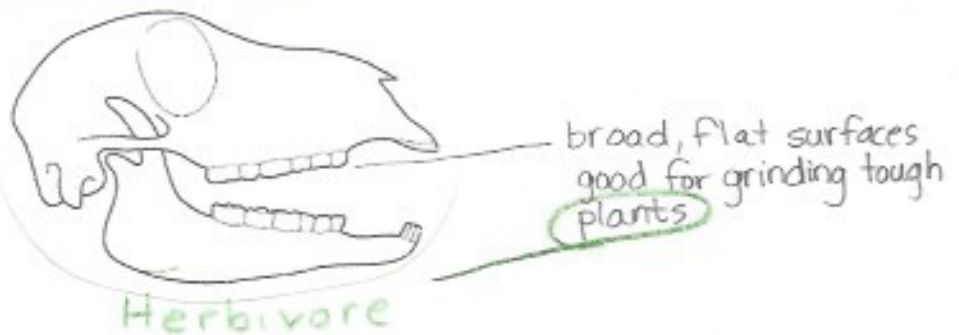


4. How do herbivores, carnivores, and omnivores differ from each other?

Herbivores only eat plants.

Carnivores only eat animals.

Omnivores eat both plants and animals.

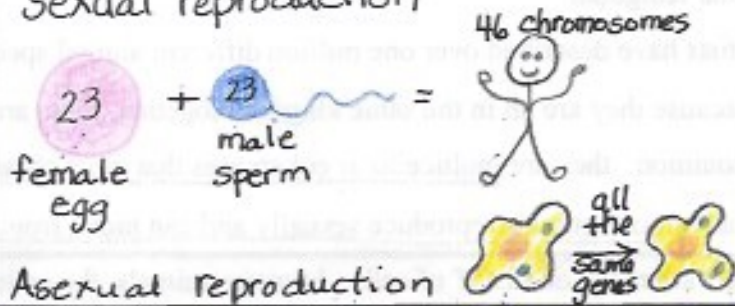


1. What is the difference between sexual and asexual reproduction?

Sexual = joining of 2 separate sex cells to reproduce

asexual = a single organism produces a new organism identical to itself

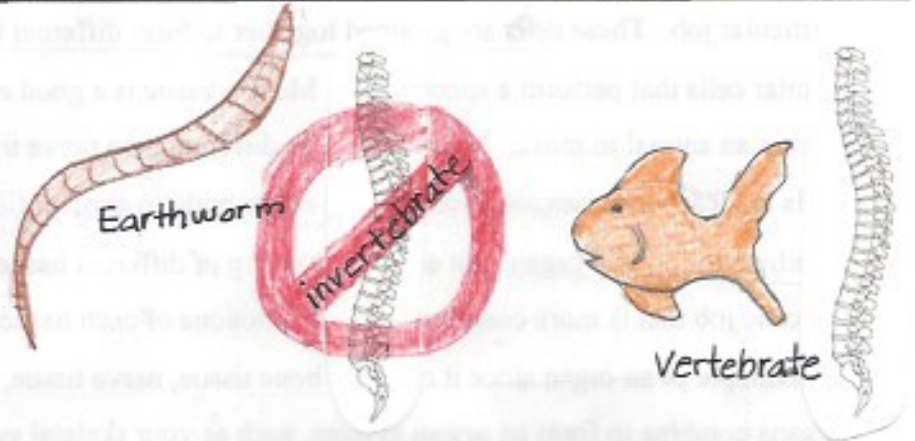
### Sexual reproduction



2. What is the difference between an invertebrate and a vertebrate?

invertebrates = no backbone

vertebrates = backbone



3. What is bilateral symmetry?

A line dividing an organism that results in the same image on both sides of the line



4. What advantages does bilateral symmetry give an organism?

They move more efficiently & quickly than most animals with radial symmetry.

This helps them get food and avoid enemies.

